

## Medina medication bins



These compartmented medication bins are specifically used for medication distribution in Medcart Roller Shutters. They are subdivided for the various administration moments.

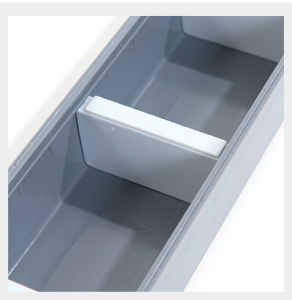
Thanks to the sliding and transparent lid, the medication remains in the correct compartment during transport. This avoids mistakes.

With compartmentalized medication bins, one can be provided per patient with several administration times per day.



### » Labeling

On the front of the handle there is space to place a label. The various dividers indicate the application time.



### » Easy to subdivide

The trays are equipped with a sliding system in which the dividers fit. The dividers are continuously adjustable so that the trays can be optimally subdivided per application time.



### » Modular use

The tray has a size of 600 x 400 mm so that it not only fits in the Medcart Roller Shutter, but also in other ISO modular cabinets or racks. It is possible to place 8 trays per tray.

## » Medina medication bins



### » Medina tray with 8 bins

Article Number	Number of bins / tray	Ext. Dimensions
15011 00061	8	600 x 400 mm



### » Medina tray without bins

Article Number	Ext. Dimensions
15011 00053	600 x 400 mm



### » Medina medication bin with 3 subdivisions

Article Number	Ext. Dimensions
15011 00054	67 x 385 x 41 mm